

The Meadows at Marshdale Rev 9-30-11



Flexible Business Space!

Current Amenities (Lower Level)

(up to 10 members)
Shared Workspace
Shared Social Area
On-Demand Private Office (by reservation)
Lounge
Food Prep Area
Restrooms
Entryway business card display
Wireless Internet
Physical mailing address (depending on membership level)

Expanded EPiC Space (Upper Level)

(8-12 members)
Crow's Nest Lounge
On-Demand Conference Room (by reservation)
Dedicated Workspace
Private Suites
Storage
Shower

Membership Levels

"EPiC Day" - \$35/day

*To have an "EPiC Day," you'll have access to the common areas during the business day and be able to reserve the private office up to four hours within one month prior to use.
(Evenings and weekends upon availability)*

"Business Essentials" - \$100/month (6 or 12 month contract)

*"Business Essentials" members have the option of a physical mailing address and have access to shared space during the business day with the ability to reserve the private office (up to 8 hr/wk) or social area (up to 8 hr/mo) three months in advance.
(Evenings and weekends upon availability)*

"An Open Door" - \$200/month (6 or 12 month contract)

As "An Open Door" member, you can come and go as you please, have some storage space, and be able to reserve the office and social area up to one year in advance.

"My Place" - \$300/month (one-year contract)

As a "My Place" member, you will have a dedicated spot for your furniture with access to your space 24 hours a day. Reservations may be made for the private office and social area up to a year in advance.

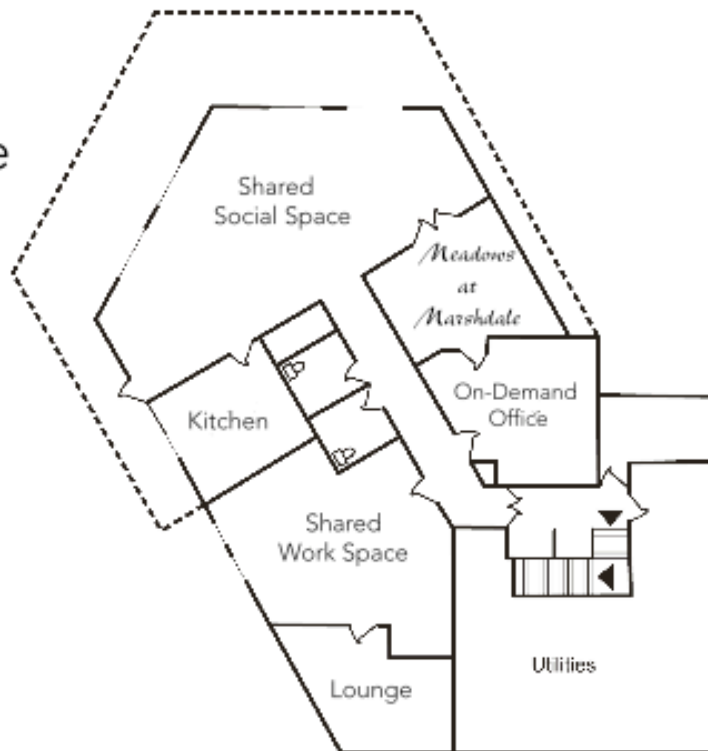
"Sweet Suite" – rate varies depending on space (one – three year contract)

"Sweet Suite" membership allows you to have private space while being able to utilize the benefits of the EPiC amenities. Reservations may be made for the office and shared space up to two years in advance.

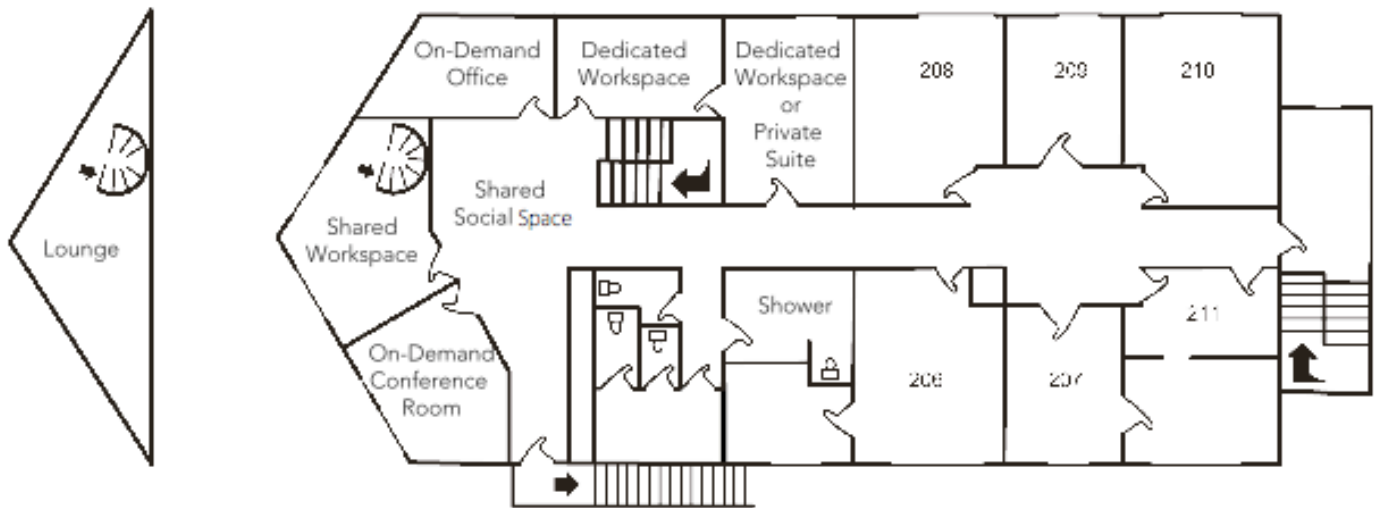
~ In the case when shared space is reserved, on On-Demand Office will be available to EPiC members.

EPiC

Business Space



Upper Level



Expansion of

EPiC

Business Space